

OFTM-56xx

OptiFiber™ Test Module

Instruction Sheet

The OFTM-56xx test modules provide fiber optic testing capabilities for the OF-500 OptiFiber™ tester.

Note

To ensure that the tester works with the new module, update the tester's software to the latest version, which is available on the Fluke Networks website. See "Updating the Tester's Software" for more information.

A module comes with the following:

- Instruction sheet
- Warranty registration card

Module Capabilities

Model OFTM-561x Multimode Module Capabilities			
Model	OTDR	Power Meter	Loss/Length Test Set
OFTM-5610	•		
OFTM-5611	•	•	
OFTM-5612	•	•	•

Model OFTM-563x Singlemode Module Capabilities			
Model	OTDR	Power Meter	Loss/Length Test Set
OFTM-5630	•		
OFTM-5631	•	•	
OFTM-5632	•	•	•

Removing and Installing the Module

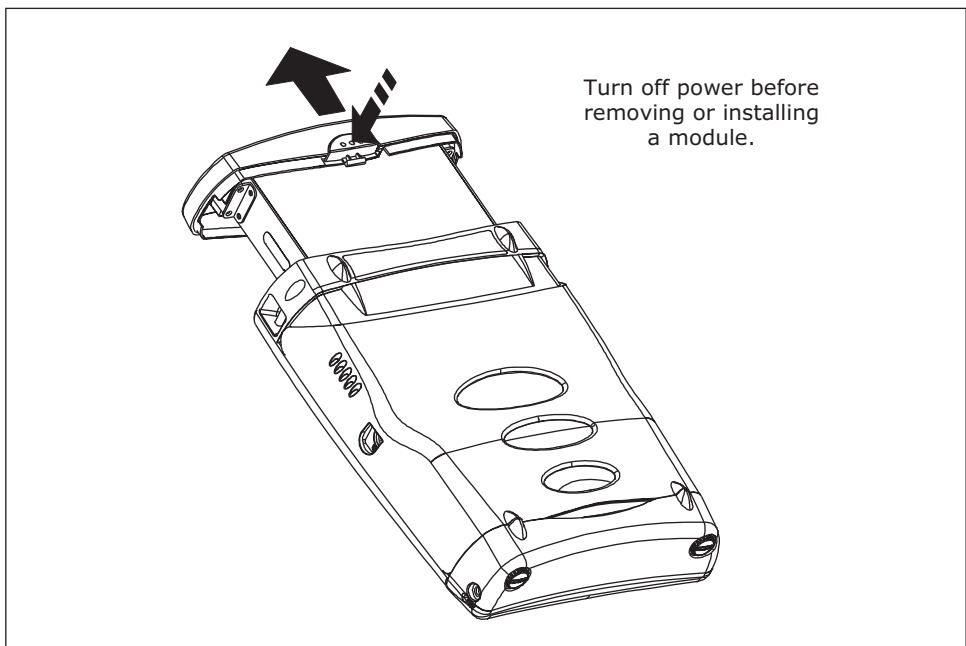
Caution

To avoid corrupting the tester's software, always turn the tester off before removing or installing a module.

Figure 1 shows how to remove the module. To install the module, push it into the tester until the latch clicks. If **"No Module Installed"** or **"Problem with Module"** appears in the upper-right corner of the screen when a module is installed, check the following:

- The module and mainframe may have incompatible software versions. See "Updating the Tester's Software" for more information.
- Verify that the module is pushed completely into the mainframe. Inspect the module and mainframe connectors for contamination or damage.

If the problem persists, contact Fluke Networks for assistance.



ape01f.eps

Figure 1. Removing and Installing a Module

Updating the Tester's Software

To install a software update in your tester use one of the following methods:

Caution

To avoid unexpected loss of power, connect the ac adapter to the tester when updating the software.

Note

Changes to the update procedure may be posted on the OptiFiber software page on the Fluke Networks website.

- **Update via the USB or serial port**
Use the latest version of LinkWare software to download the update from a PC to the tester via the tester's USB port or serial port. See the *OF-500 OptiFiber Users Manual* or the LinkWare documentation for details.
- **Update via a memory card created with LinkWare**
Use the latest version of LinkWare software to create a software update memory card (see the *OF-500 OptiFiber Users Manual* or the LinkWare documentation for details). Put the memory card in the tester, press **FUNCTIONS**; then select **Install Software Update**.

Using the Module with the Tester

Instructions for setting up the tester and testing fiber cable are provided in the *OF-500 OptiFiber Users Manual*, the *OF-500 OptiFiber Technical Reference Handbook* on the OF-500 OptiFiber Product Manuals CD, and the tester's online help.

Specifications

Specifications for OptiFiber modules are provided in the *OF-500 OptiFiber Users Manual*.

Registration

Registering your product with Fluke Networks gives you access to valuable information on product updates, troubleshooting tips, and other support services. To register, fill out and return the postage-paid card provided, or fill out the online registration form on the Fluke Networks website at www.flukenetworks.com/registration.

Contacting Fluke Networks

Visit the Fluke Networks website at www.flukenetworks.com. Send email to support@flukenetworks.com.

To call us:

- Australia: 61 (2) 8850-3333 or 61 3 9329 0244
- Beijing: 86 (10) 6512-3435
- Brazil: 11 3044 1277
- Canada: 1-800-363-5853
- Europe: +44 1923 281 300
- Hong Kong: 852 2721-3228
- Japan: +81-3-3434-0181
- Korea: 82 2 539-6311
- Singapore: +65-6738-5655
- Taiwan: (886) 2-227-83199
- USA: 1-800-283-5853

Anywhere in the world: +1-425-446-4519

Visit our website for a complete list of phone numbers.

LIMITED WARRANTY & LIMITATION OF LIABILITY

Fluke Networks products will be free from defects in material and workmanship for one year from the date of purchase. Parts, accessories, product repairs, and services are warranted for 90 days. This warranty does not cover disposable batteries, cable connector tabs, cable insulation-displacement connectors, or damage from accident, neglect, misuse, alteration, contamination, or abnormal conditions of operation or handling. Resellers are not authorized to extend any other warranty on Fluke Networks' behalf. To obtain service during the warranty period, contact your nearest Fluke Networks authorized service center to obtain return authorization information, then send your defective product to that Service Center with a description of the problem.

THIS WARRANTY IS YOUR ONLY REMEDY. NO OTHER WARRANTIES, SUCH AS FITNESS FOR A PARTICULAR PURPOSE, ARE EXPRESSED OR IMPLIED. FLUKE NETWORKS IS NOT LIABLE FOR ANY SPECIAL, INDIRECT, INCIDENTAL OR CONSEQUENTIAL DAMAGES OR LOSSES, ARISING FROM ANY CAUSE OR THEORY. Since some states or countries do not allow the exclusion or limitation of an implied warranty or of incidental or consequential damages, this limitation of liability may not apply to you.

6/01

Fluke Networks
PO Box 777
Everett, WA 98206-0777
USA